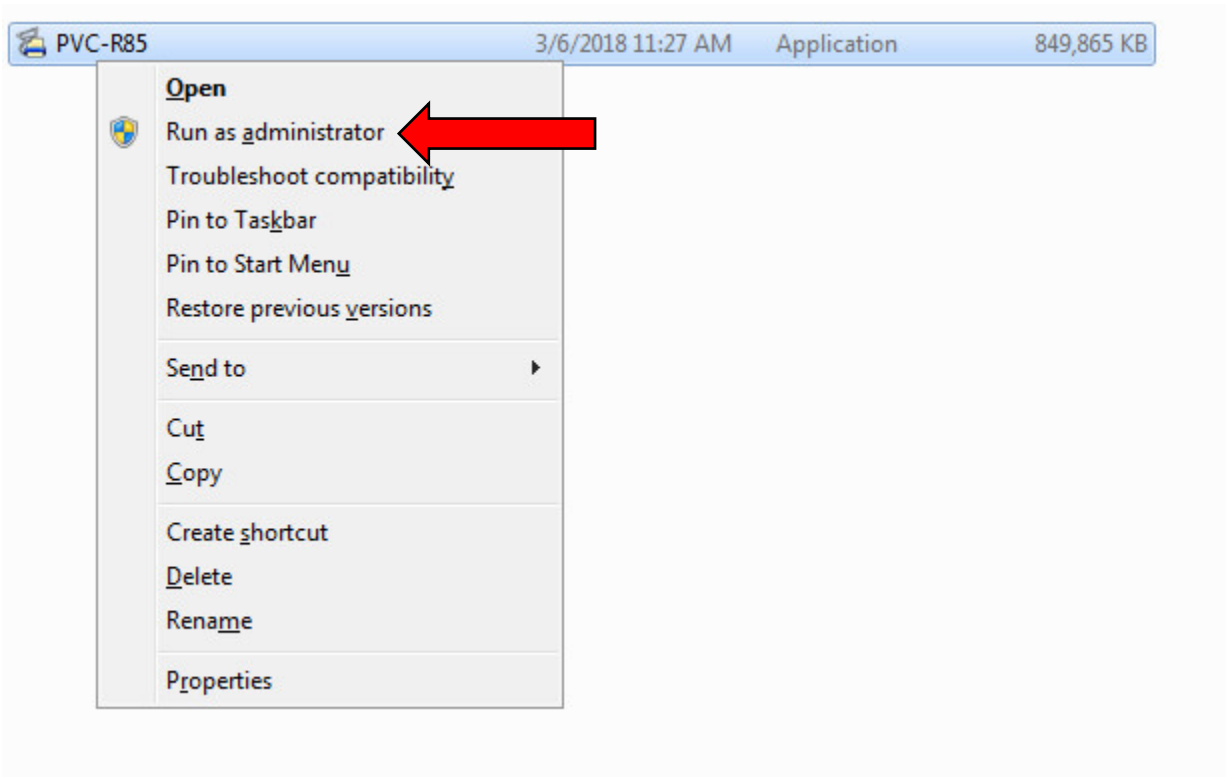


## How to Install PaperVision Capture

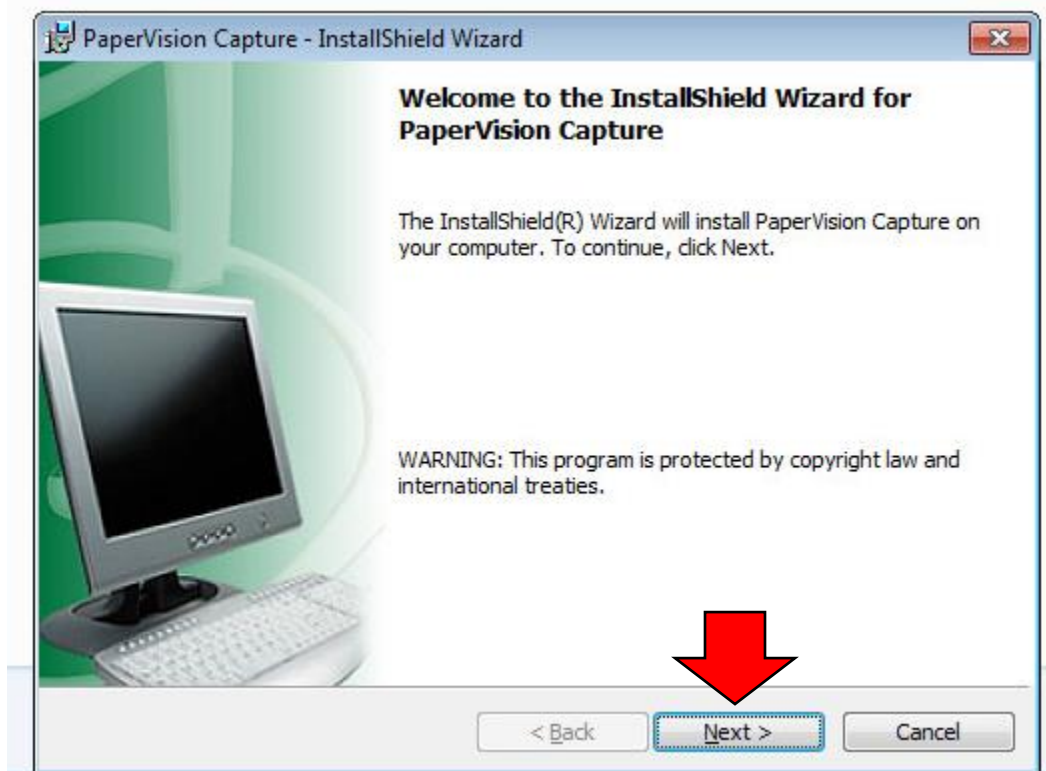
1. Go to <ftp://ftp.rmm-i.com/Software/Digitech/Capture/>
2. Click on the "PVC-R85.EXE" (no quotation marks) to download the PaperVision Capture R85 installer.
3. Once the installer has completed downloading, please copy and paste it to your desktop or folder on your C:\ drive in case the downloads folder will not allow installations from it.
4. Once you have placed the installer on your desktop or in a folder on your C:\ drive etc. the following steps will guide you through the installation.
5. Right click on the PVC-R85 installation file and "Run as Administrator" to begin the installation process.



6. After beginning the installation process, the installer will begin by Extracting the PaperVision Capture.msi installer, which will take a bit of time, then the InstallShield Wizard will open to begin the next steps.



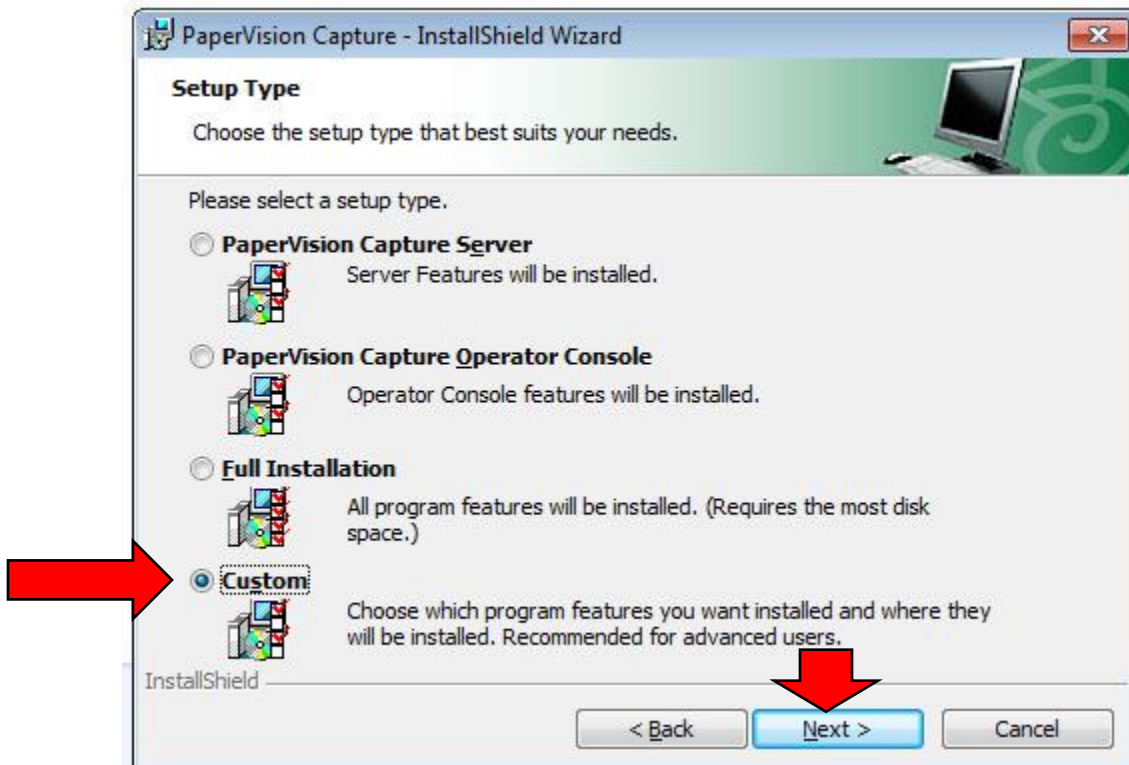
7. Now that the InstallShield Wizard is up, hit the “Next” button to proceed through the first prompt please.



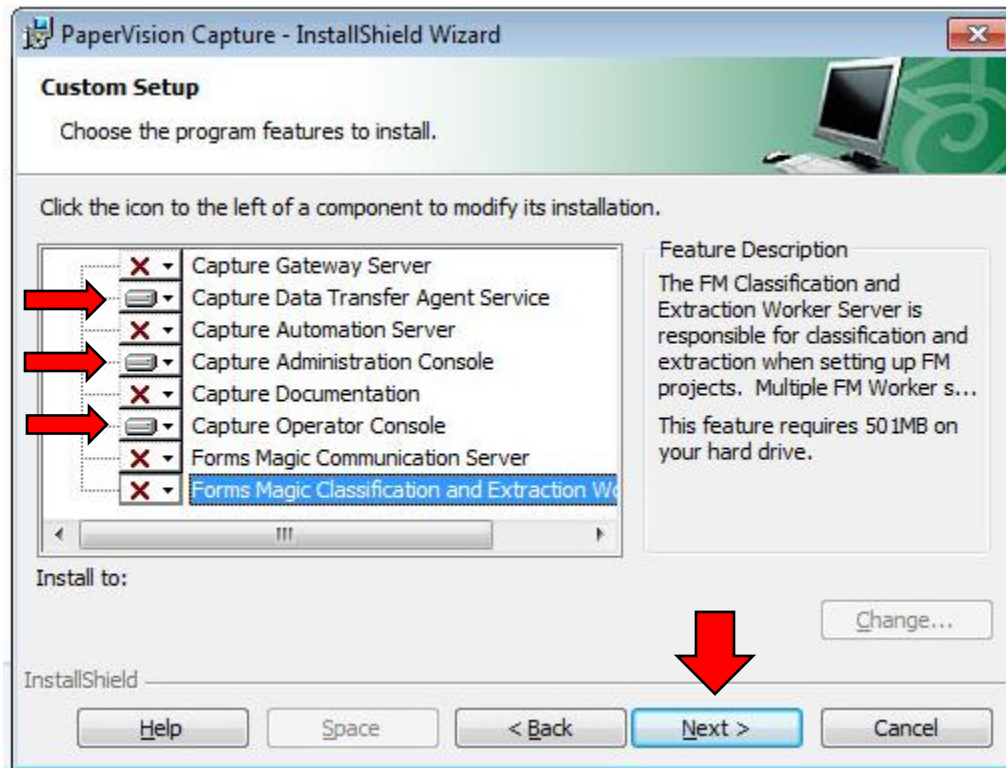
- At the License Agreement Prompt please hit the “I accept the terms in the license agreement” and hit the “Next” button to continue the Install.



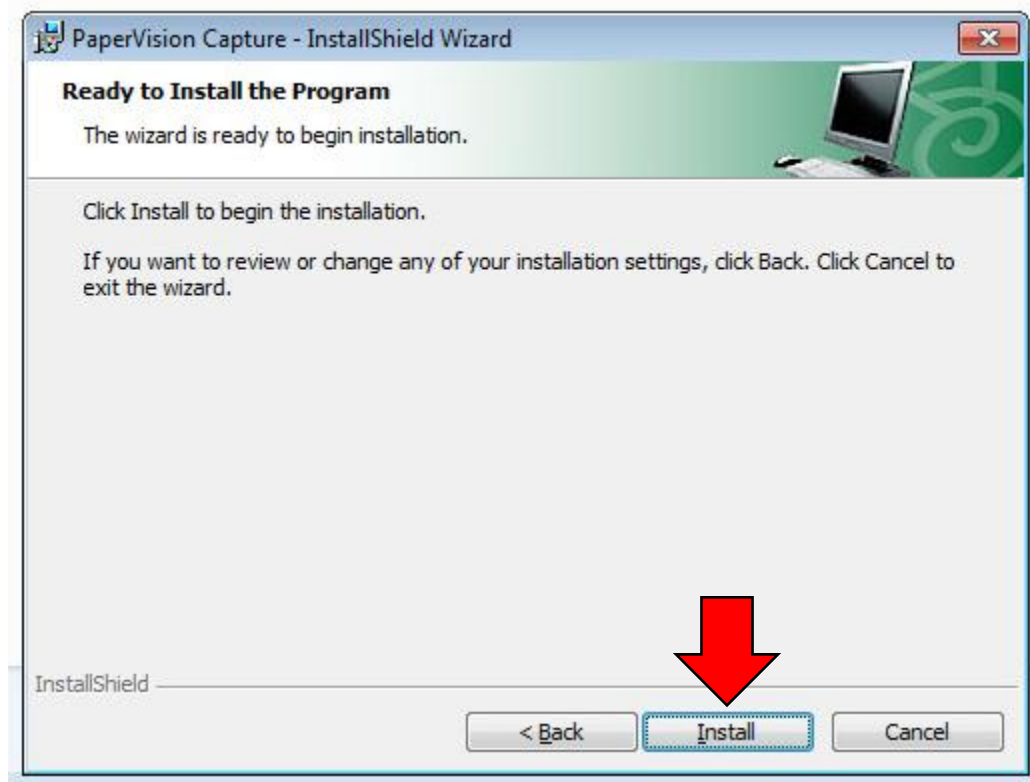
- At the next screen you will select “Custom” for the installation type, and hit the “Next” button to proceed to the component selection.



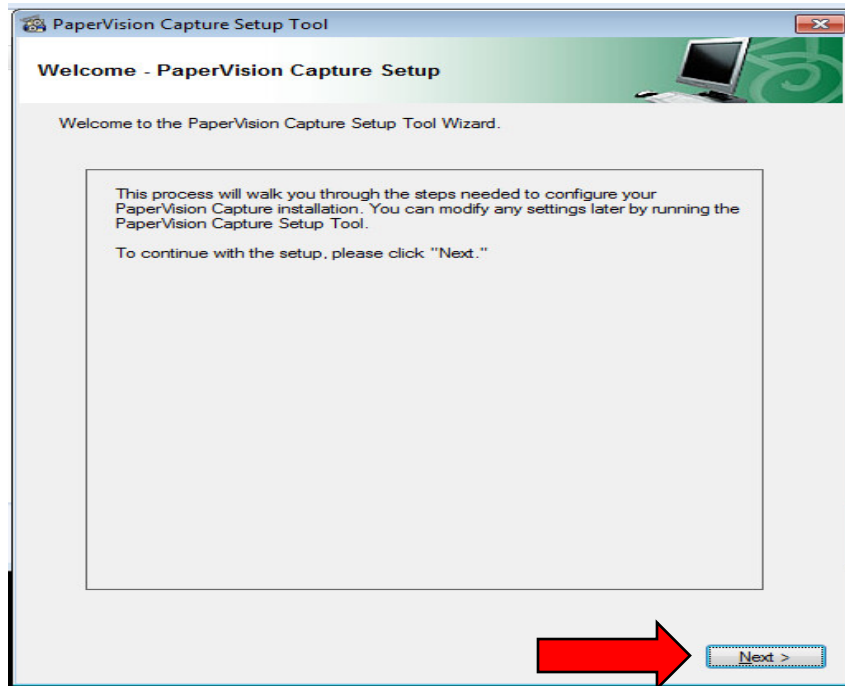
10. At the “Custom Setup” screen we are going to select the “This feature will not be available” option for all of the features except the “Capture Data Transfer Agent Service”, “Capture Administration Console”, and “Capture Operator Console” as seen in the screenshot below these three components will be the only 3 installed. After doing this hit the “Next” button to continue the installation.



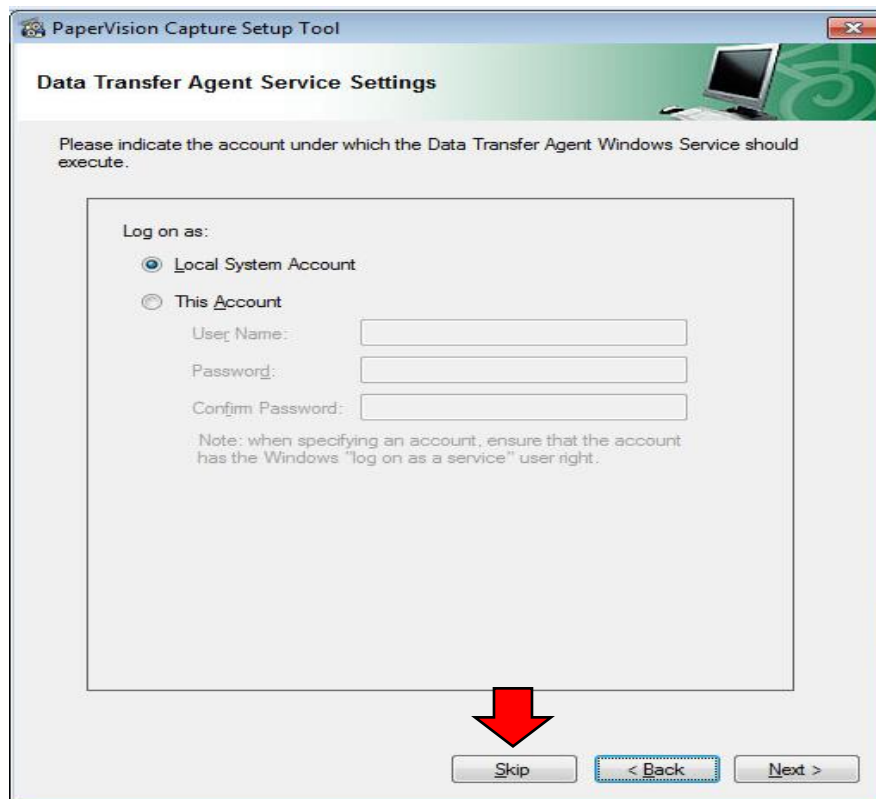
11. Now on the last prompt please hit the “Install” button to begin the actual installation.



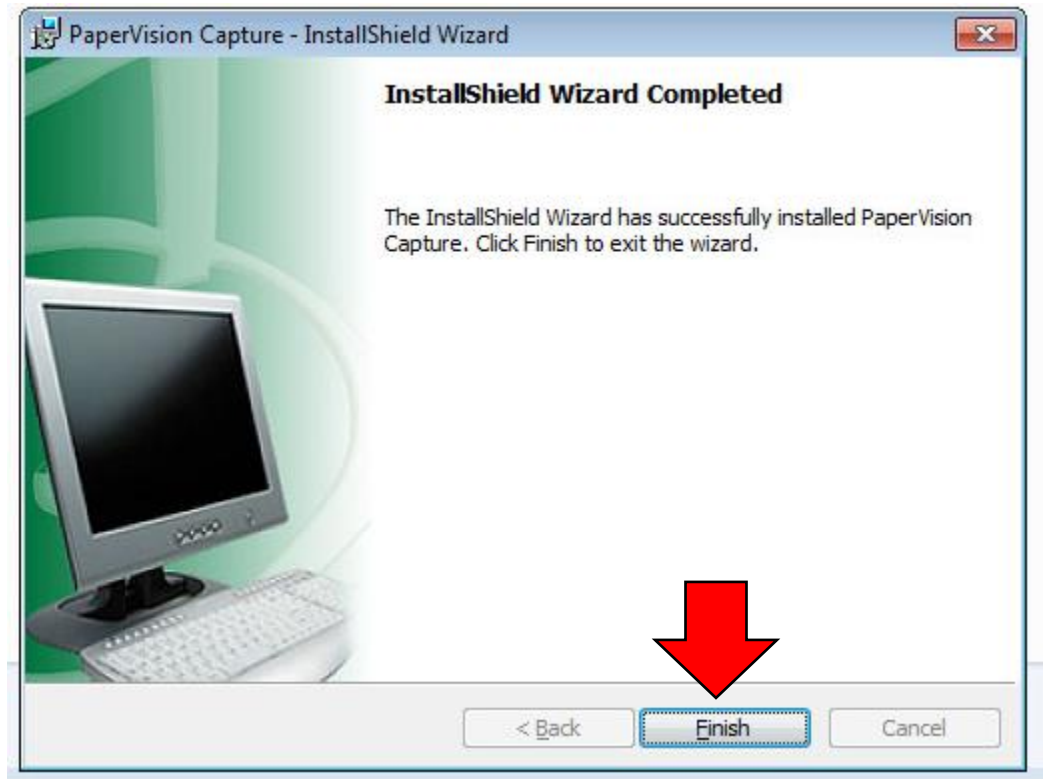
12. The installation process will begin, and install the 3 components that were selected earlier, “Capture Data Transfer Agent Service”, “Capture Administration Console”, “Capture Operator Console”, after the components have successfully installed, the PaperVision Capture Setup Tool will come up.
13. Please hit the “Next” button to continue into the PaperVision Capture Setup Tool, you will not need to configure any of these settings as we will take care of it.



14. Please hit the “Skip” button on the subsequent 3 screens, and the “Finish” button on the final screen to complete this step.



15. After hitting the “Finish” button on the PaperVision Capture Setup Tool, there will be one final “PaperVision Capture – InstallShield Wizard” screen that will appear, please hit the Finish button to finalize and complete the installation.



16. Thank you for following this guide, the PaperVision Capture installation is now complete, and it is now ready to be configured and setup for use.